



Fact Sheet Bathing establishment

Bathhouse name	La Vela
Address	Via Roma 38
City	Castiglione della Pescaia (Gr)
Contacts	Tel +39 0564935335
Website	Not detected

TESTED BY: [Handy Superabile - Social Promotion Association](#) in summer 2023

Please note The following information refers to the verification date shown at the bottom of each card. **The Association** is not responsible for any significant changes made by the property after the visit.

Summary

Fact Sheet Bathing establishment.....	1
Arrival at the facility	2
Private/public parking.....	2
Pathway from the parking lot to the main entrance	2
Reception	3
Bar/restaurant	4
Internal Pathways and common services	5
Internal Pathways.....	5
Toilet and shower accessible to guests with reduced mobility.....	5
Changing room.....	7
Beach.....	8
Children's play area.....	9
Swimming pool.....	9
Doctors' Offices/Healthcare Facilities	9



Project carried out with the contribution of the





Arrival at the facility

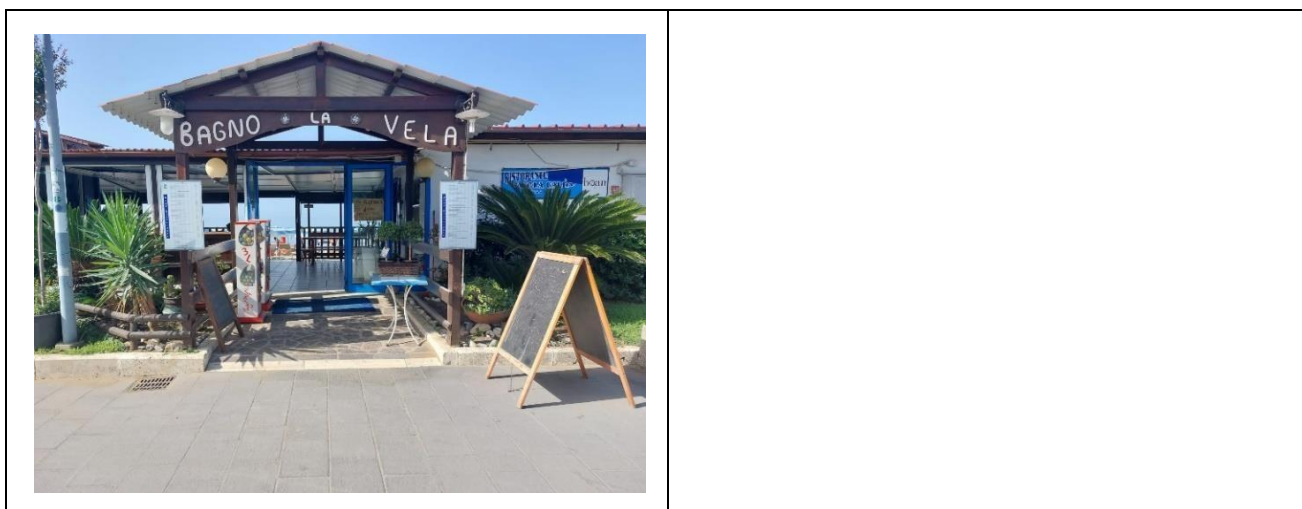
Private/public parking

Presence of private parking	NO
Public parking nearby	YES
Presence of parking space reserved for people with disabilities	YES
Type of parking surface	ASPHALT
	

Pathway from the parking lot to the main entrance

Pathway from the car park to the entrance	by ramp length 340 cm, width greater than 90 cm, slope 2%
There are markers and tactile maps	NO
Usable door/entrance width	more than 90 cm





Reception

Umbrella booking system	<input type="checkbox"/> Via web <input checked="" type="checkbox"/> By phone <input checked="" type="checkbox"/> On-site
Presence of multilingual staff	YES
Presence of plant plan with key to services available	NO
Presence of visuo-tactile map	NO
Bulletin board/information panels at an average height of 130 cm in a well-lit area and font size at least 14 dpi with a contrast ratio greater than 4.5:1	NO
The staff attended training courses on welcoming people with different disabilities	NO





Bar/restaurant

Type of venue	Bar/restaurant
Access to the premises	Flat
Usable door/entrance width	more than 90 cm
Bar counter	height greater than 100 cm
Types of tables	4-legged
Space underneath the tables from the floor	more than 70 cm
Multilingual menu	YES
Menus with large print fonts	NO
Braille menu	NO
Table service for people with disabilities	YES
Availability of gluten-free food	<input checked="" type="checkbox"/> bread <input checked="" type="checkbox"/> pasta <input type="checkbox"/> biscuits <input type="checkbox"/> ice cream <input checked="" type="checkbox"/> Pre-packaged foods



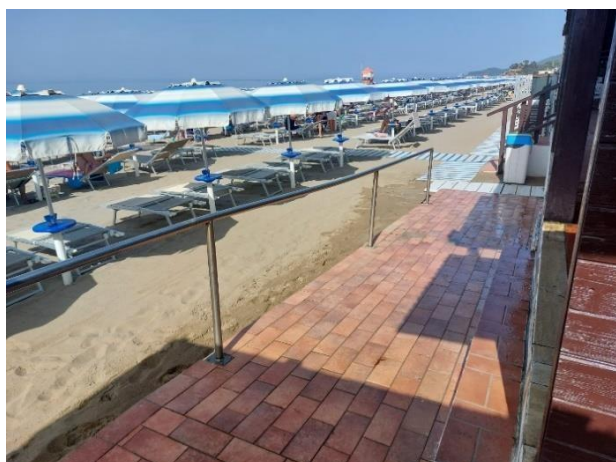
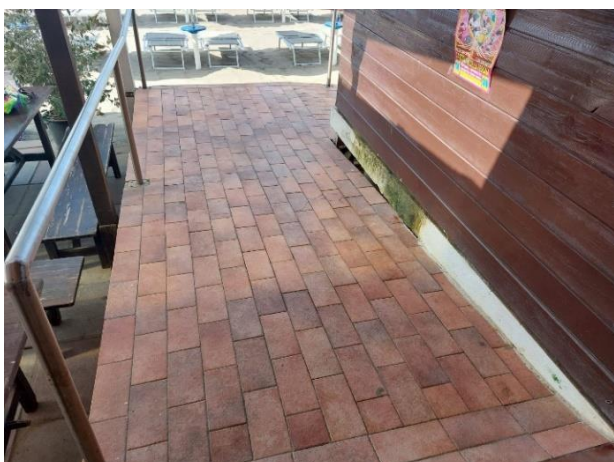


Internal Pathways and common services

Internal Pathways

Indicate whether the pathways connecting the entrance to the beach are flat or with ramps in addition to those already described

flat paths with a double ramp 320 cm long and 160 cm wide with a 7.2% slope, the second 660 cm long and 160 cm wide with an 8% slope





Toilet and shower accessible to guests with reduced mobility

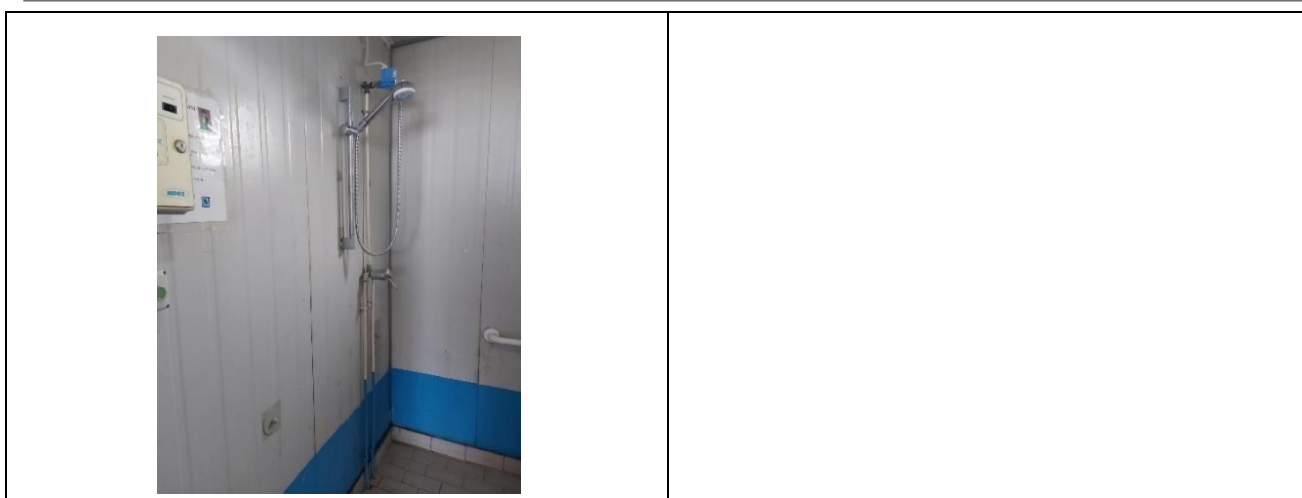
Number of toilets accessible/usable by guests with reduced mobility	1
Access to the premises	Flat
Usable width of the entrance door	more than 90 cm
Toilet height	50 cm
Open front toilet seat	YES
Support handles	on both sides of the toilet
Flexible hand shower at the side of the toilet	NO
Free space on the sides of the toilet	left more than 90 cm right 23 cm





	frontal more than 90 cm
Electric doorbell/phone	YES
Washbasin with space underneath for wheelchair	68 cm
Height from the ground on the bottom edge of the mirror	Suitable for wheelchair users
Baby changing table	YES
	
Accessible shower available for guests with reduced mobility	SI separated from the toilet room
Access to the shower room if separated from the toilet room	Flat
Useful width of the door/entrance gate if separated from the toilet room	more than 90 cm
Shower type	open-type
Floor-level shower	YES
Shower chair	missing
Grab bar	YES
Presence of shower head or ups and downs	Sliding rails with lowest point height 120 cm
Electric doorbell/phone	NO







Changing room

Accessible changing room available for guests with reduced mobility	YES
Access to the premises	Flat
Usable door/entrance width	more than 90 cm
Size of the dressing room	sufficient for wheelchair manoeuvring
Presence of a cot	NO
Coat rack height from the ground	Missing coat rack

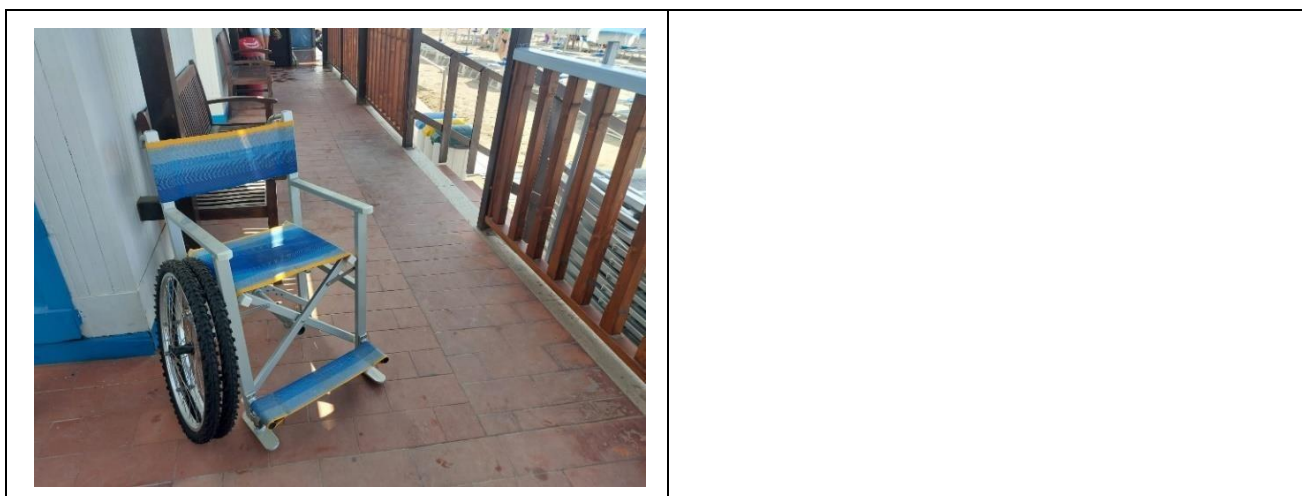




Beach

Type of beach	sand
Access to the beach	via 2 ramps: the first length 320 cm, width 160 cm, gradient 7.2%; second length 660 cm, width 160 cm, gradient 8 %
Walkway to reach the umbrellas	YES
Type of walkway	PVC
Walkway width	90 cm
	
Removable Platform between the walkway and the umbrella station to facilitate the passage and parking wheelchair	YES
Amphibious beach chair available for helping people with reduced mobility to enjoy swimming (owned by the establishment or by association)	OTHER





Children's play area

Children's play area	missing
----------------------	---------

Swimming pool

The property has a swimming pool	NO
----------------------------------	----

Doctors' Offices/Healthcare Facilities

Hospitals near the facility	Ospedale Misericordia via Senese, 161 Grosseto at 25 km
Other Healthcare Facilities	Presidio socio sanitario ASL via Roma 1, Castiglione della Pescaia, tel 056443921 - 0564/43921 – 0564/483080



Project promoted by



Regione Toscana

	Dialysis service on holiday at Ospedale Misericordia Grosseto U.O. Nephrology and Dialysis Tel. 0564 485.218
--	---

TESTED BY: Handy Superabile Social Promotion Association in summer 2023

Project carried out with the contribution of the



**Presidenza del
Consiglio dei Ministri**
Ministro per la disabilità